

Fossil Manufacturing LLC.

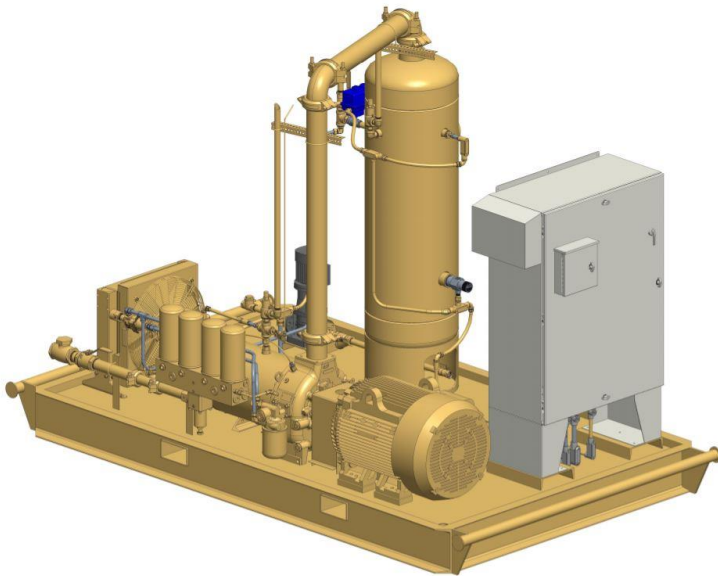
Fossil Standard VRU

Standard Features:

- Exceeds EPA Quad O regulations
- Pressure vessels and process piping built in accordance with applicable ASME code
- Class 1 Div 2 compliant electrical components (requires remote mounting of panel)
- Heavy Duty skid base with spill containment and environmental rail
- Variable speed control with a high turndown rate for maximum efficiency
- Variable speed cooling for temp control in all weather conditions (controls condensate, freeze-offs)
- Pressure circuits are protected by normal shutdown settings and relief valves
- Normal, open skid layout provides easy access to all componentry
- No threaded connections on piping/fittings above 2"
- Common, industry accepted componentry...no custom, special or "proprietary" parts are used
- Standard primer base with customer preferred color of industrial enamel coating
- Certificates of Origin/Material Certification documents provided as required for all components
- Simple, operator-friendly Control Unit with Allen Bradley PLC and Schneider VFD drive providing all necessary speed control, throttling, unit protection and data logging with SCADA capability
- Package includes optional ASME code shell and tube style after-cooler with temp control

Capacities:

- Ranges from 10 MCF – 600 MCF
- 10hp – 400hp



432-553-7659

5827 Acton Circle
Granbury, TX 76049

*Actual performance will vary based on gas constituents, flow, pressure, and ambient conditions. Contact us for more information and a performance evaluation of your application.