

# Fossil Manufacturing LLC.

## Fossil 3-Stage Electric Drive Gas-Lift Package

### Standard Features:

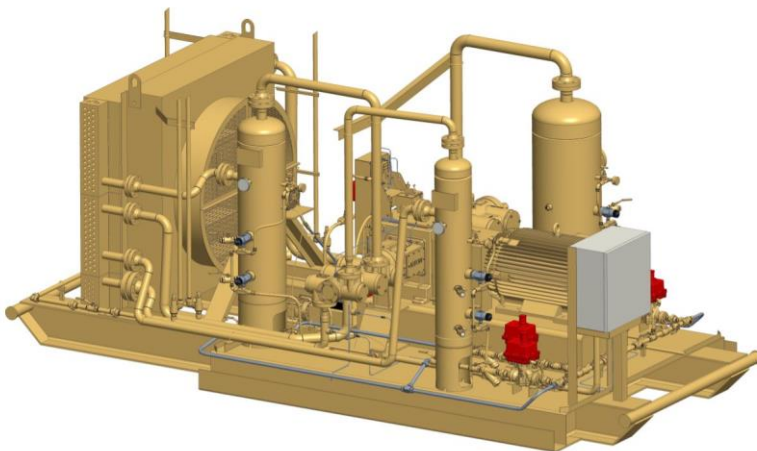
- Advanced PLC based control system with variable speed drive capability.
- Fixed speed or variable speed, based on operator flow range setting.
- Remote monitoring and control (start, stop, reset on selected kills, flow range)
- Capable of operation in a wide range of inlet conditions from 10-75 psi. Wet gas compatible design.
- Heavy duty, oilfield style skid with environmental rail, floor plating and easily accessible service points.
- High speed, Arrow inline compressor frame, prevents horizontal couple for vibration free operation.
- All electric, programmable actuated dumps, dump valves and control devices for worry free-operation.
- No regulated gas on skid, prevents freeze-offs in cold weather operation.
- Variable speed cooler drive allows operator to control inlet temps in all weather conditions.
- Package designed for low noise operation close-in to residential areas.

### Options:

- Sound attenuated wind curtains for cold weather and operation in residential areas.
- Remote monitoring and control via customer's preferred telemetry network.

### Capacities:

- Two-Throw 3-stage 200 HP unit...  
**250-1000 MSCFD\***
- Four-Throw 3-stage 400 HP unit...  
**250-2000 MSCFD\***



**432-553-7659**

5827 Acton Circle  
Granbury, TX 76049

\*Actual performance will vary based on gas constituents, flow, pressure, and ambient conditions. Contact us for more information and a performance evaluation of your application.